



connect / manage / extend

# IBYKUS/ IoT suite

## connect

**Retrofitting** of non-networked industrial machines for **Industry 4.0**

**Collection and visualization** of sensor data and operating times in the production process

**Presentation and selection of** job cards/production orders at the machine

**Collection and visualization** of additional information in the production process, e.g., checklists

Machine with IoT terminal



Multifunctional sensor



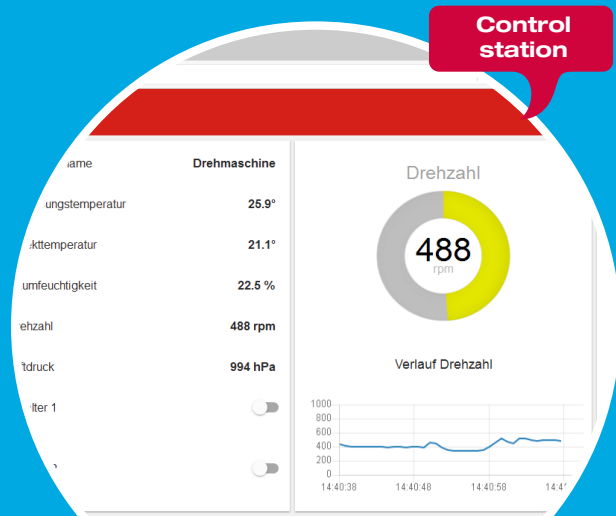
connect / manage / extend

# manage

**Visualization of the state** of the machine as a cockpit overview

**Paperless production** thanks to visualization of order and production data at the machine

**Flexible access** within the production environment or as management cockpit



MITAN® ERP SYSTEM

# extend

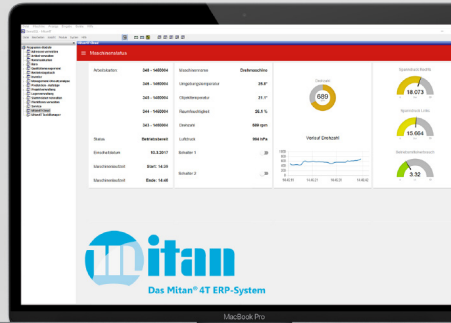
**Visualization of the control station**  
within the Mitan ERP system

**Creation** of production orders/job cards

**Assignment** of job cards to production  
machines

**Production** release

**Automatic writeback** of production data  
from the machine to Mitan job cards



---

connect / manage / extend

# PRODUCT DESCRIPTION

The IBYKUS/ IoT suite provides a step-by-step introduction to Industry 4.0. Thanks to retrofitting and integration into existing software environments, the system can be implemented efficiently and cost effectively.

---

## FIELDS OF APPLICATION

- Digitization of machine workstations
- Bidirectional connection of order processing to production
- Collection and visualization of sensor data and operating times in the production process
- Presentation of work instructions and other process documents at the machine
- Predictive maintenance

# RANGE OF FUNCTIONS / MODULES

## **Dashboard module**

Visualization of control stations and cockpits

## **Checklist module**

Compliance with and documentation of work instructions and test procedures

## **Authentication module**

RFID or barcode scanner

## **Multilingualism**

User-dependent internationalization of the application

## **Database connection** (MSSQL, MySQL, Oracle)

Integration into existing IT infrastructures

## **ERP compatibility**

Connection to existing systems for production digitization, e.g., MITAN® 4T ERP system / [mitan.de](http://mitan.de)

# VALUE PROPOSITIONS

The IBYKUS IoT suite provides you with an integrated approach for implementing digitization in your company:

- 
- **Cost savings through retrofitting of non-networked industrial machines**
  - **No need to invest in PDC terminals thanks to Raspberry Pi solutions**
  - **Direct collection of plant data at the workstation**
  - **Downtimes minimized thanks to prompt evaluation of malfunctions and machine states**
  - **Optimization of production processes and prevention of production downtimes thanks to live monitoring**

# RANGE OF SERVICES

As one of the leading IT service providers in central Germany, we offer you a complete package including associated consulting services for:

- 
- **Process integration into existing IT infrastructures**
  - **Connection to existing production planning and production systems**
  - **Digitization/implementation of individual software and communication processes**





[www.ibykus.de/iot](http://www.ibykus.de/iot)  
[mitan.de](http://mitan.de)

Tel. +49 361 4410 0  
Fax. +49 361 4410 410

E-mail. [info@ibykus.de](mailto:info@ibykus.de)  
Internet. [www.ibykus.de](http://www.ibykus.de)

[facebook.com/ibykus.de](https://facebook.com/ibykus.de)  
[twitter.com/ibykusag](https://twitter.com/ibykusag)